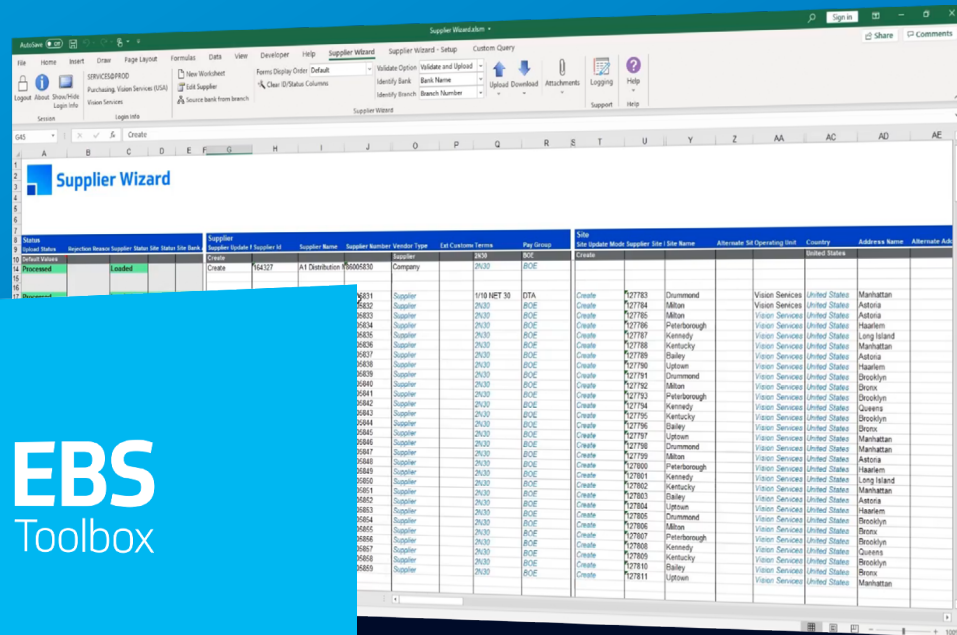


# Supplier Master Data in Oracle

With fully-integrated spreadsheets, loading 1000s of Suppliers can be uploaded to Oracle in minutes rather than hours.



Accurate supplier master data is essential for purchasing and AP invoicing. That's why users prefer the More4apps suite of tools.

Leveraging Excel spreadsheets for supplier master data eliminates Oracle's HTML forms, which have complex and costly navigation screens. Customizable layouts support business processes, and data elements are visible simultaneously for many suppliers.

A fully integrated spreadsheet makes loading 1000s of suppliers into Oracle seamless. Existing suppliers get downloaded and modified as required and updated en mass.

Users control the entire data process and remove the need for costly IT resources or administrative tasks.

The process for adding information to Oracle is manual and slow, so errors are easy to make and hard to find. As a result, the accuracy and reliability of your ERP are impacted, affecting your ability to work fast and keep up with market changes.

Excel spreadsheets remove that pain and are suitable for data conversion, migration, and BAU tasks. Furthermore, spreadsheets adapt to business processes, allowing you to perform mass uploads of new suppliers or changes to existing ones.

The built-in download features give you visibility of your supplier master in every detail. From minor changes to mass updates, fulfill requests fast and on schedule, knowing your data is up-to-date and error-free.

Suitable for Oracle E-Business Suite R12 releases.



*A smarter, more intuitive Excel-based data loading solution for Oracle EBS.*

## Overview

Navigating Oracle forms to create a supplier, including site and banking information, takes more than 5 minutes per supplier.

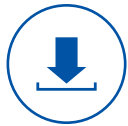
The lack of visibility a user has of their data results in high error rates because they can't determine if the data was entered as intended.

Identifying where an element is missing or incorrectly configured leads to complicated searches and moving through numerous entry screens for each supplier.

Making block changes, like replacing a single value for multiple suppliers, costs minutes per supplier that requires searching, locating the old value, modifying it, saving, and navigating back to the search form.

The More4apps spreadsheet-based tools eliminate the navigation and search costs, allowing users to apply the change to all rows. Therefore, a simple change for 100s of suppliers now takes less than one minute.

## Benefits



Users can directly load data into an Excel spreadsheet using APIs without an interface or administrative steps. Data-owning end-users prepare and load their data directly into the spreadsheet, where they receive error feedback immediately and can quickly react, removing process bottlenecks and the need for costly IT resources.



Supports descriptive and key flex fields, reading your setup dynamically and always in sync with EBS.



Supports suppliers, attachments, contacts, business classifications, and banking, which includes intermediary account details.



Complete multi-org functionality.



The flexible spreadsheets include as few or as many columns as you require.



Harnesses the Oracle-seeded Public APIs, keeping you aligned with your Oracle support contract. Access governed by Oracle security, using EBS username, password, and responsibility, ensuring adherence to Oracle authorities and restrictions.



Excel integrates directly with Oracle. The built-in controls allow you to download existing data, upload data, and amend the data with validated edit forms.



Supports single sign-on.




Leverages Excel features, like copy & paste, formulas, lookups, and more to fast-track data entry.

## Use Cases

- Onboard new suppliers efficiently.**  
 Customize your sheet to encapsulate the required data elements, including address, site, and banking, while eliminating unneeded columns.  
 Copy & paste your supplier details and load your data effortlessly.
- Supplier bank account maintenance is easy using the download and update features.**  
 Download your accounts into the worksheet.  
 End-date your accounts or their assignments. Assign or reassign them to other sites or addresses or easily designate them to different suppliers with built-in auto-assign-account-ownership functionality.
- Using the default row feature, you can apply mass updates easily and with reduced data entry.**  
 Download your existing records, set the new value for your update in the default row along with the 'update' action, clear existing values in the data rows, and upload. The default engine handles the data population and updates in seconds.
- Duplicate supplier sites for newly created operating units using multi-org functionality.**  
 To create supplier sites for your new operating unit, download the existing sites, copy their values to a new row, enter the new operating unit, and upload immediately.

## Competitive Advantage

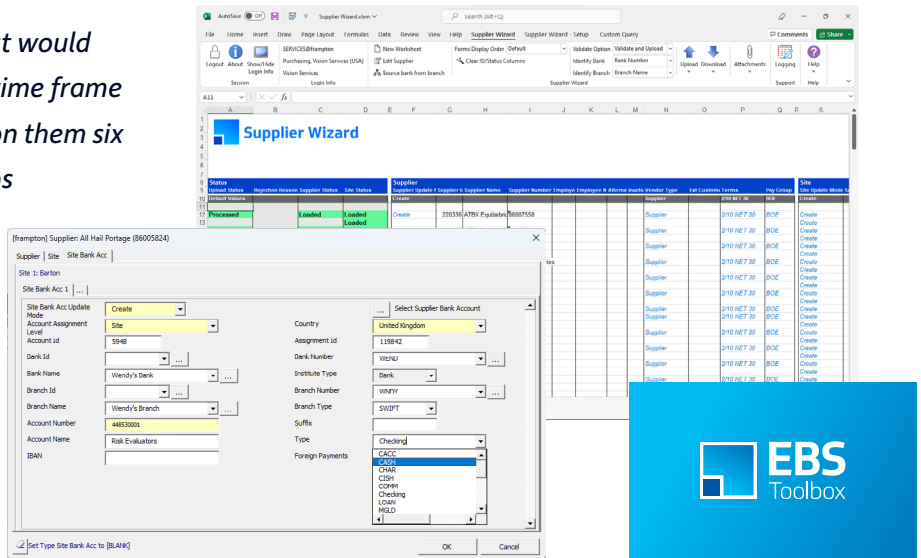
	Oracle Forms	ADI/ WebADI	Data Loader	
Designed for End Users	✓	✓	⊖	✓
Completely Supports Mass Data Entry	⊖	⊖	⊖	✓
Sheet Data Entry	⊖	✓	✓	✓
User Data Entry Forms	✓	⊖	⊖	✓
User Customizable Layout	⊖	⊖	⊖	✓
Realtime Data Validation	✓	✓	⊖	✓
Form/Sheet Error Feedback	✓	✓	⊖	✓
Handles Patches and Upgrades With Ease	✓	⊖	✓	✓
Download Existing Data Objects without Limitations	✓	⊖	⊖	✓
Robust and Stable	✓	⊖	⊖	✓
Free From Development & Internal Support	✓	⊖	⊖	✓

## Supported Functional Areas

- ✓ Suppliers
  - ✓ Business Classifications
  - ✓ Attachments
- ✓ Banking (incl. Intermediary Account details)
  - ✓ Contacts
- ✓ Key & Descriptive Flexfields
  - ✓ Sites & Addresses

*“Trying to update 24,000 records just would not have happened manually in the time frame required. We would still be working on them six months later. Without the More4apps products, we’d probably need a few more people just to keep the data up-to-date and be able to run projects like this would require lot of overtime!”*

*– Josh Evangelista, Data Management Coordinator*



## Architecture

- ✓ Compatible with Microsoft Excel 2013 and later versions
- ✓ Oracle R12
- ✓ Uses Oracle E-Business Suite security
- ✓ XML web-based communication
- ✓ No client install
- ✓ Install and set up in minutes
- ✓ Single sign-on compliant
- ✓ MOAC compliant

Experience the confidence that More4apps will give you and your team.

**Request a demo today!**

[www.more4apps.com](http://www.more4apps.com) | [info@more4apps.com](mailto:info@more4apps.com)

